

# Indian Mound Farm

5335 Russell Cave Rd | 420± ACRES | Lexington, KY



Indian Mound Farm, located on the corner of Russell Cave Road and Old Lemons Mill is one of the most iconic properties in Central Kentucky. The soils, the views and the history are simply legendary. This property includes over 9300 feet of manicured road frontage and is enclosed by excellent diamond mesh fencing throughout. While the farm is currently designed with over 9 large fields and 5 smaller paddocks for the raising and finishing of top-quality cattle, the possibilities for conversion to an equine nursery are tremendous. The land and soils are excellent, consisting entirely of federally rated Prime Farmland. Other amenities include 2 large feed barns, two equipment storage barns, a large concrete pad and retention for compost operations and two nearly new 3 bedroom-2 bath employee residences. Indian Mound Farm represents spectacular opportunity for the future.

*Listing Price: \$10,500,000*



**Tom Biederman**  
Broker  
**859.312.0606**



**BiedermanRealEstate.com**

**859.277.2030**  
1076 Wellington Way  
Lexington, KY 40513



Large concrete pad  
and retention for  
compost operations

84x145 cattle  
penned feed barn  
with 18' aisle, 16'  
roll up door and  
14' roll up doors  
around the exterior





142x38 equipment  
and hay storage barn  
with 4 stainless  
steel grain bins and  
unloader



31x94 hay and  
equipment storage  
barn

Barn on left is  
57x94 with 2 BR  
2 BA apartment  
with office







145x80 barn with  
cattle pens and  
center aisle

Another view of the  
new 84x145 cattle  
penned  
feed barn



More than 9 large  
fields and  
5 paddocks



Two identical 3 BR  
2 BA employee  
residences

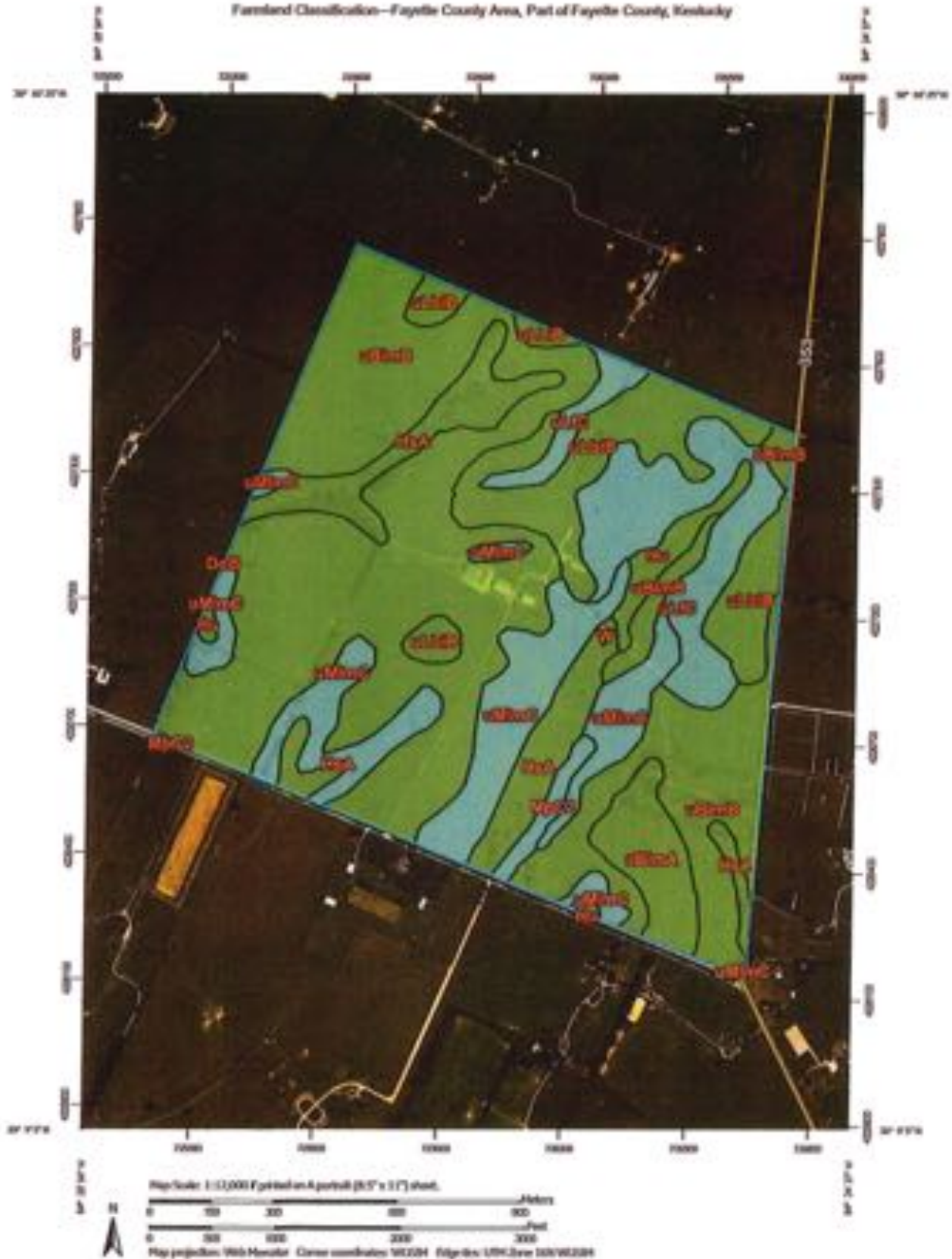


Historic residence  
in need of  
renovation





Farmstead Classification—Fayette County Area, Part of Fayette County, Kentucky



Natural Resources  
Conservation Service

Web Soil Survey  
National Cooperative Soil Survey

8/19/2025  
Page 1 of 5

## Farmland Classification

Map unit symbol	Map unit name	Rating	Acres in ADI	Percent of ADI
DcB	Donnell silt loam, 2 to 6 percent slopes	All areas are prime farmland	0.0	0.0%
HuA	Huntington silt loam, 0 to 2 percent slopes, clayey substratum, occasionally flooded	All areas are prime farmland	37.4	8.9%
Hu	Huntington silt loam, 0 to 4 percent slopes, occasionally flooded	All areas are prime farmland	7.8	1.9%
McC2	McKee silty clay loam, 6 to 12 percent slopes, eroded	Farmland of statewide importance	4.2	1.0%
uBtmA	Bluegrass-Maury silt loams, 0 to 2 percent slopes	All areas are prime farmland	15.5	3.7%
uBtmB	Bluegrass-Maury silt loams, 2 to 6 percent slopes	All areas are prime farmland	204.9	49.0%
uLB	Lowell-Bluegrass silt loams, 2 to 6 percent slopes	All areas are prime farmland	48.1	11.5%
uLC	Lowell-Faywood silt loams, 6 to 12 percent slopes	Farmland of statewide importance	41.8	10.0%
uBtmC	Maury-Bluegrass silt loams, 6 to 12 percent slopes	Farmland of statewide importance	58.0	13.8%
W	Water	Not prime farmland	0.1	0.0%
Totals for Area of Interest			417.7	100.0%

## Description

Farmland classification identifies map units as prime farmland, farmland of statewide importance, farmland of local importance, or unique farmland. It identifies the location and extent of the soils that are best suited to food, feed, fiber, forage, and oilseed crops. NRCS policy and procedures on prime and unique farmlands are published in the "Federal Register," Vol. 43, No. 21, January 31, 1978.

## Rating Options

Aggregation Method: No Aggregation Necessary

Tie-break Rule: Lower



*Biederman Real Estate will strive to represent our clients,  
both buyers and sellers, with the utmost responsibility.  
Our representatives will always work to our highest  
abilities to provide successful transactions for all parties.*

*We Get it Done!*



[www.BiedermanRealEstate.com](http://www.BiedermanRealEstate.com)

1076 Wellington Way . Lexington. KY . 40513

859.277.2030